



DIAMOND
PROPERTIES

MEDICAL SPACE

329 White Plains Rd. | Eastchester, NY



SPACE FEATURES

- Close to the Hutchinson River PKWY, Bronx River Pkwy and I-87
- Medical and Professional Offices
- Professional Management
- Build-to-Suit Offices
- Card Access 24 Hours/7 Days Per Week
- Abundant Parking

AVAILABLE SPACE

642 SF

POSSESSION

Available Immediately

Asking Rate \$40.00 NNN

For more information about features & amenities, visit dpmgt.com.

For more information, visit
dpmgt.com or contact:

Mark Blandford
914-773-6242
mark@dpmgt.com

Ted Grogan
914-773-6264
tgrogan@dpmgt.com

The information contained herein has been obtained through sources deemed reliable but cannot be guaranteed as to its accuracy. Any information of special interest should be obtained through independent verification.

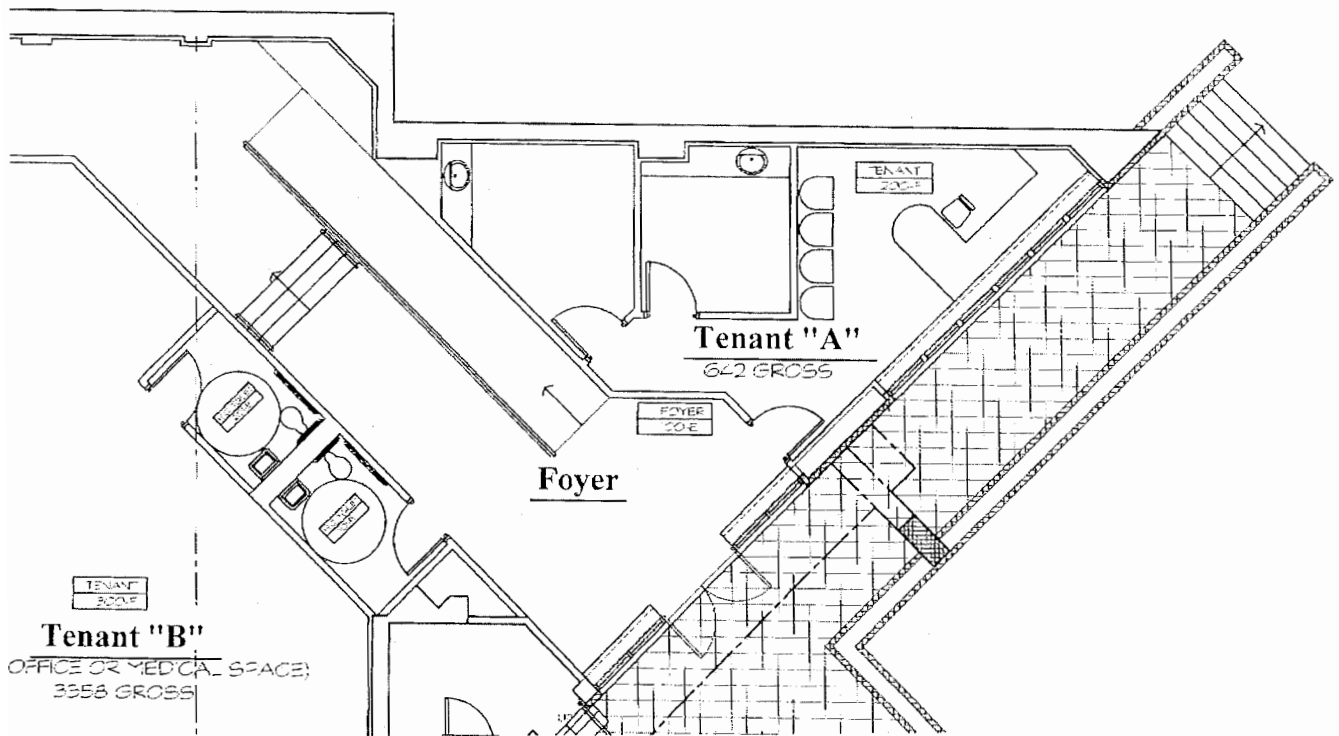


DIAMOND PROPERTY
MANAGEMENT

MEDICAL SPACE

329 White Plains Rd. | Eastchester, NY

Floor Plan: 1st Floor



For more information, visit
dpmgt.com or contact:

Mark Blandford
914-773-6242
mark@dpmgt.com

Ted Grogan
914-773-6264
tgrogan@dpmgt.com

The information contained herein has been obtained through sources deemed reliable but cannot be guaranteed as to its accuracy. Any information of special interest should be obtained through independent verification.

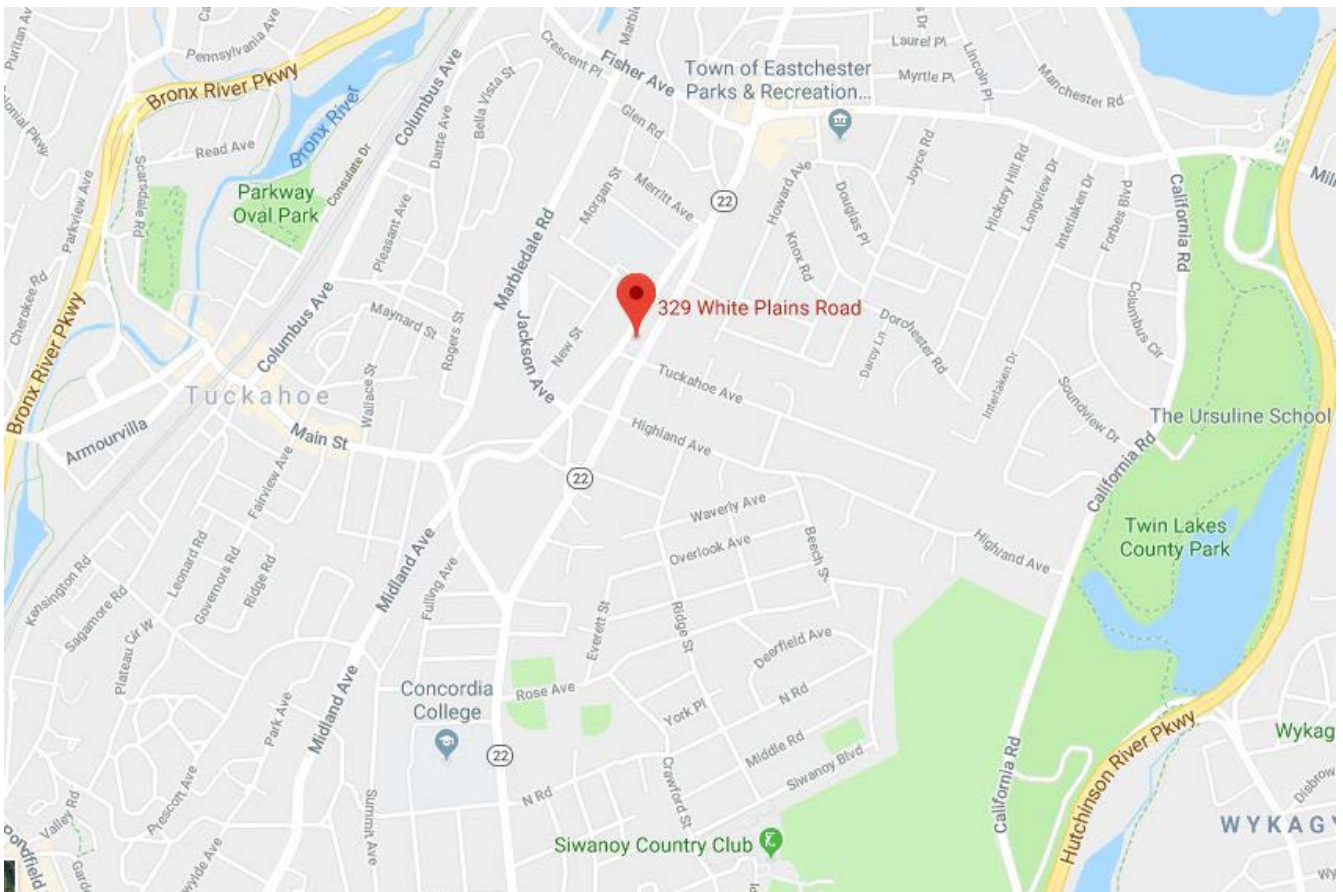


DIAMOND PROPERTY
MANAGEMENT

MEDICAL SPACE

329 White Plains Rd. | Eastchester, NY

Area Map



For more information, visit
dpmgt.com or contact:

Mark Blandford
914-773-6242
mark@dpmgt.com

Ted Grogan
914-773-6264
tgrogan@dpmgt.com

The information contained herein has been obtained through sources deemed reliable but cannot be guaranteed as to its accuracy. Any information of special interest should be obtained through independent verification.