



DIAMOND PROPERTY
MANAGEMENT

WAREHOUSE

333 N. Bedford Rd. | Mt. Kisco, NY



WAREHOUSE FEATURES

- Ceiling Height 20 Foot Clear
- Ample Parking Area
- Loading Dock
- Usage: Warehousing and Distribution
- On-site Management
- Easy Access to Saw Mill River Parkway, I-684 & MTA

AVAILABLE SPACE

Warehouse 10,460 SF

POSSESSION

Immediate

ASKING RATE

Warehouse \$14.00 NNN

For more information about features & amenities, visit diamondproperties.com.

For more information, visit
diamondproperties.com or contact:

MARK BLANDFORD

914-773-6242
mark@dpmgt.com

TED GROGAN

914-773-6264
tgrogan@dpmgt.com

The information contained herein has been obtained through sources deemed reliable but cannot be guaranteed as to its accuracy. Any information of special interest should be obtained through independent verification.



DIAMOND PROPERTY
MANAGEMENT

WAREHOUSE

333 N. Bedford Rd. | Mt. Kisco, NY



Loading Docks



Warehouse Space



Ample Parking

For more information, visit
diamondproperties.com or contact:

MARK BLANDFORD

914-773-6242

mark@dpmgt.com

TED GROGAN

914-773-6264

tgrogan@dpmgt.com

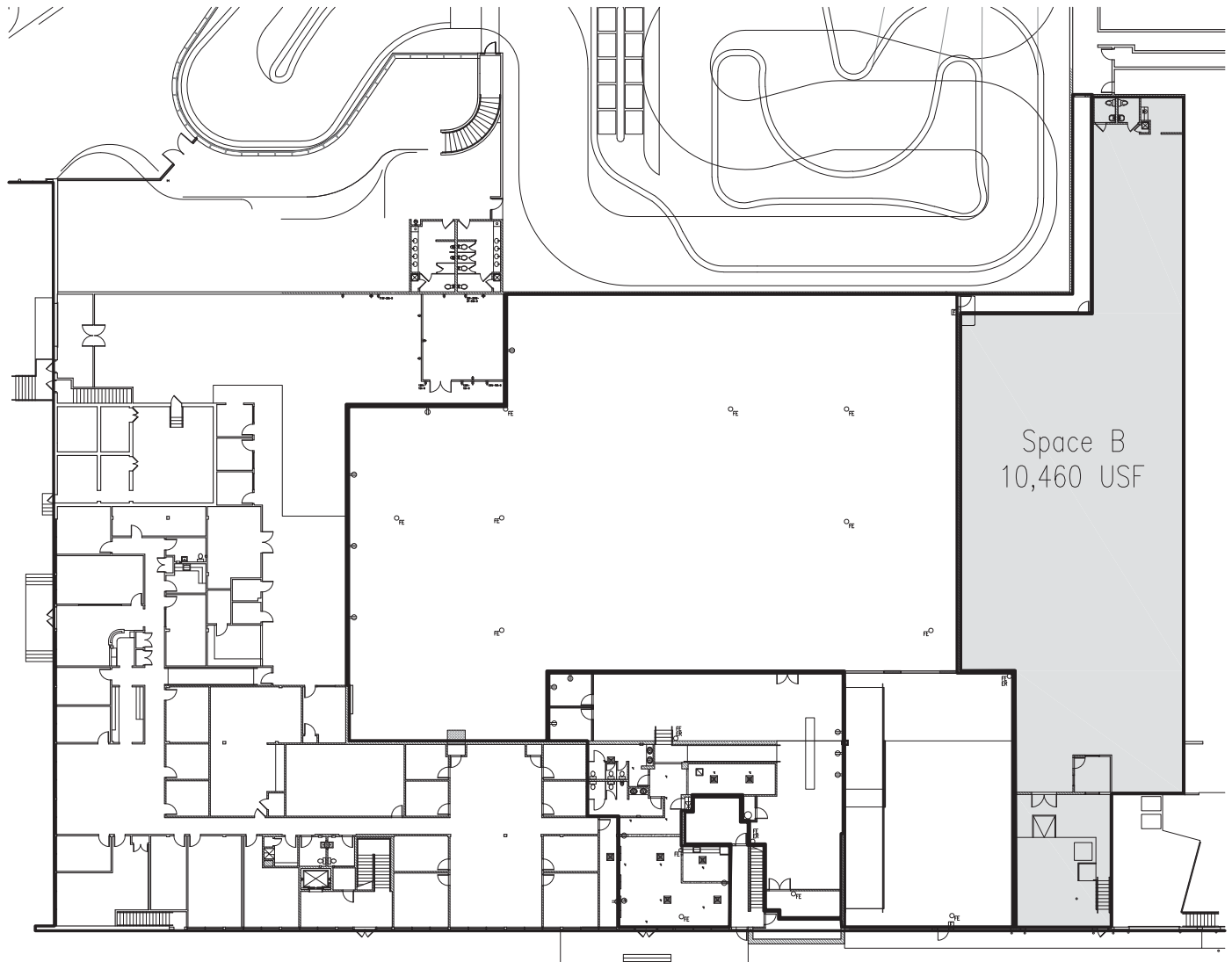
The information contained herein has been obtained through sources deemed reliable but cannot be guaranteed as to its accuracy. Any information of special interest should be obtained through independent verification.



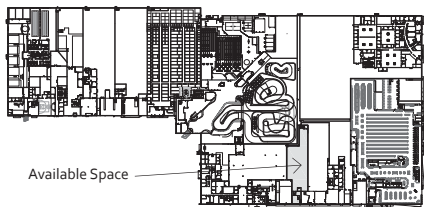
DIAMOND PROPERTY
MANAGEMENT

WAREHOUSE

333 N. Bedford Rd. | Mt. Kisco, NY



Key Plan



For more information, visit
diamondproperties.com or contact:

MARK BLANDFORD

914-773-6242

mark@dpmgt.com

TED GROGAN

914-773-6264

tgrogan@dpmgt.com

The information contained herein has been obtained through sources deemed reliable but cannot be guaranteed as to its accuracy. Any information of special interest should be obtained through independent verification.