



DIAMOND PROPERTY  
MANAGEMENT

## OFFICE & WAREHOUSE

333 N. Bedford Rd. | Mt. Kisco, NY



### WAREHOUSE FEATURES

- Ceiling Height 20 Foot Clear
- Ample Parking Area
- Loading Docks & Drive-In Bays Flexible
- Usage: Warehousing, Retail Showroom, Distribution
- On-site Management
- Easy Access to Saw Mill River Parkway, I-684 & MTA

### AVAILABLE SPACE

Warehouse A 20,000 - 120,000 SF  
Warehouse B (Showroom) 31,454 SF

### POSSESSION

Immediate

### ASKING RATE

Warehouse \$14.00 NNN

For more information about features & amenities, visit [dpmgt.com](http://dpmgt.com).

For more information, visit  
[dpmgt.com](http://dpmgt.com) or contact:

**MARK BLANDFORD**

914-773-6242  
[mark@dpmgt.com](mailto:mark@dpmgt.com)

**TED GROGAN**

914-773-6264  
[tgrogan@dpmgt.com](mailto:tgrogan@dpmgt.com)

The information contained herein has been obtained through sources deemed reliable but cannot be guaranteed as to its accuracy. Any information of special interest should be obtained through independent verification.



DIAMOND PROPERTY  
MANAGEMENT

## OFFICE & WAREHOUSE

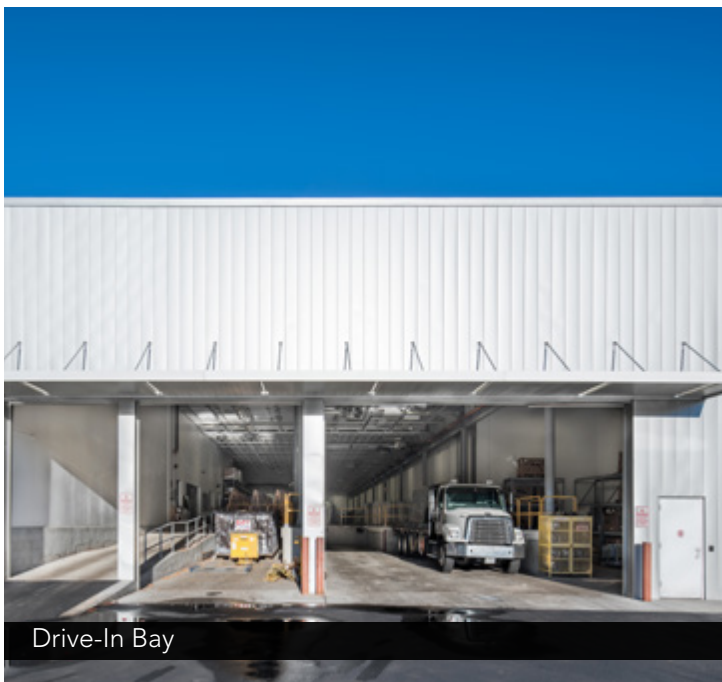
333 N. Bedford Rd. | Mt. Kisco, NY



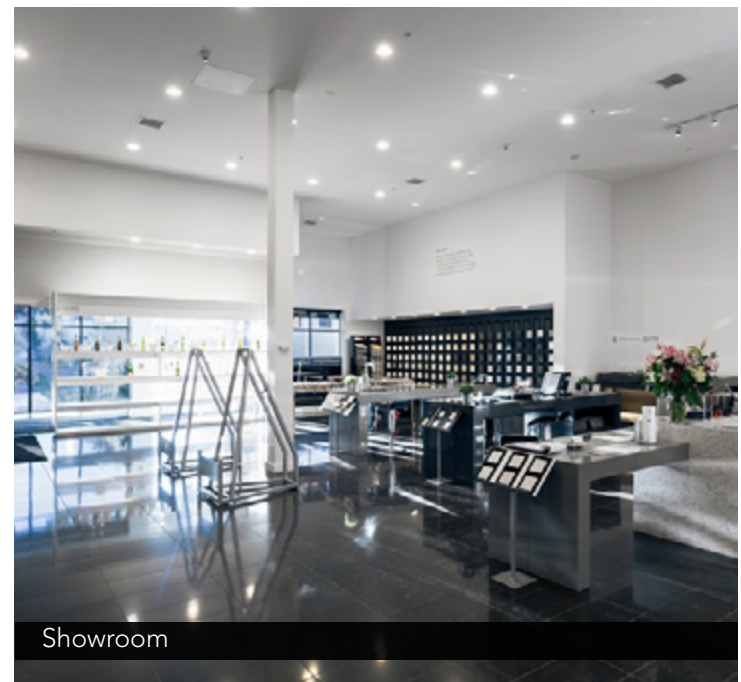
Warehouse Space



Loading Docks



Drive-In Bay



Showroom

For more information, visit  
[dpmgt.com](http://dpmgt.com) or contact:

**MARK BLANDFORD**

914-773-6242

[mark@dpmgt.com](mailto:mark@dpmgt.com)

**TED GROGAN**

914-773-6264

[tgrogan@dpmgt.com](mailto:tgrogan@dpmgt.com)

The information contained herein has been obtained through sources deemed reliable but cannot be guaranteed as to its accuracy. Any information of special interest should be obtained through independent verification.

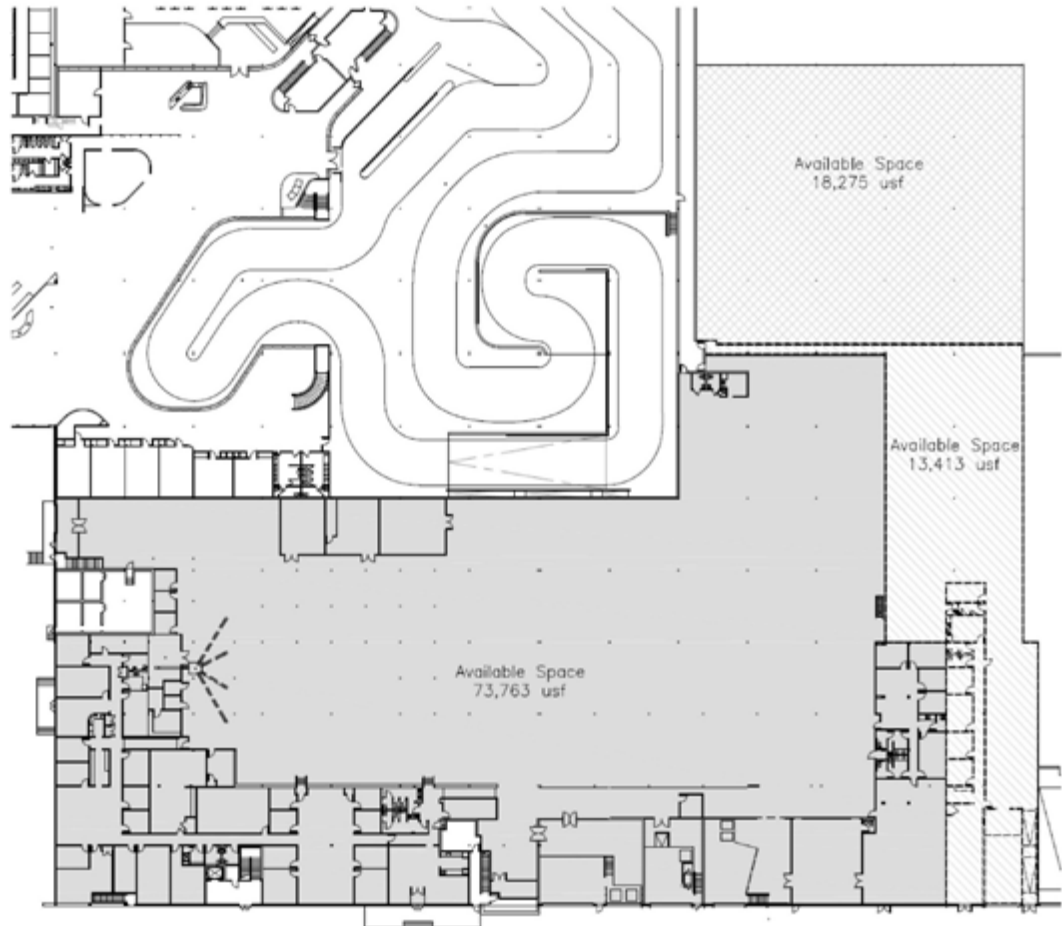


DIAMOND PROPERTY  
MANAGEMENT

## OFFICE & WAREHOUSE

333 N. Bedford Rd. | Mt. Kisco, NY

### Floor Plan: Warehouse Space A



#### Key Plan



For more information, visit  
[dpmgt.com](http://dpmgt.com) or contact:

**MARK BLANDFORD**  
914-773-6242  
[mark@dpmgt.com](mailto:mark@dpmgt.com)

**TED GROGAN**  
914-773-6264  
[tgrogan@dpmgt.com](mailto:tgrogan@dpmgt.com)

The information contained herein has been obtained through sources deemed reliable but cannot be guaranteed as to its accuracy. Any information of special interest should be obtained through independent verification.

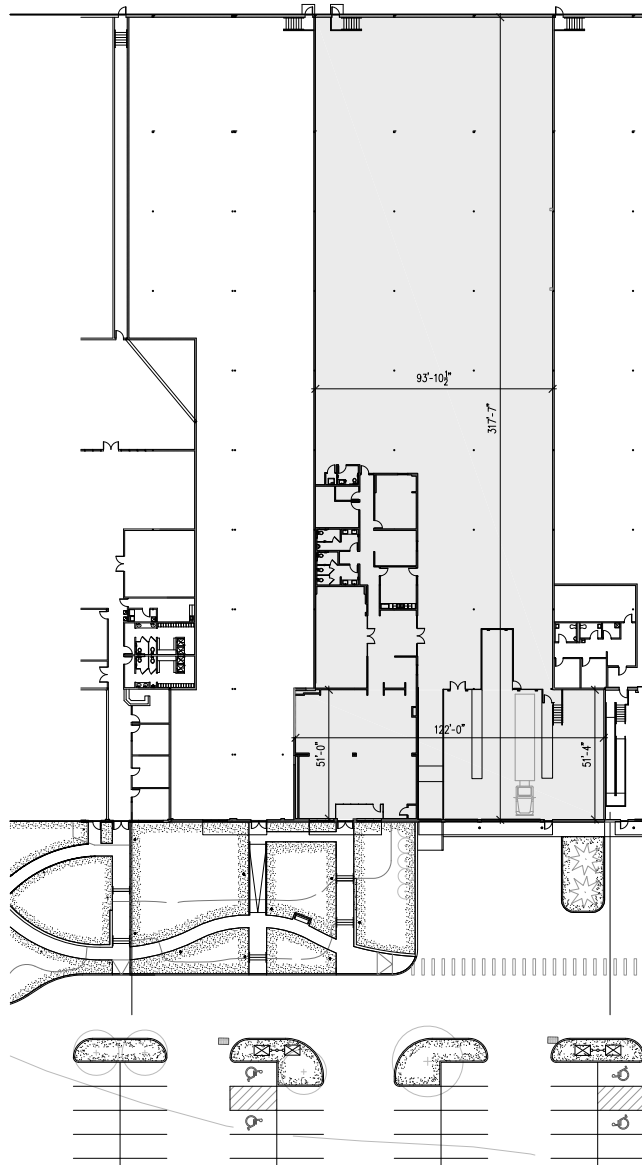


DIAMOND PROPERTY  
MANAGEMENT

# OFFICE & WAREHOUSE

333 N. Bedford Rd. | Mt. Kisco, NY

## Floor Plan: Warehouse Space B



Available Space  
333 N. Bedford, Mount Kisco NY

NORTH  
Scale: 1/16"=1'-0"  
Existing Floor Plan  
16 January 2018

For more information, visit  
[dpmgt.com](http://dpmgt.com) or contact:

**MARK BLANDFORD**

914-773-6242  
[mark@dpmgt.com](mailto:mark@dpmgt.com)

**TED GROGAN**

914-773-6264  
[tgrogan@dpmgt.com](mailto:tgrogan@dpmgt.com)

The information contained herein has been obtained through sources deemed reliable but cannot be guaranteed as to its accuracy. Any information of special interest should be obtained through independent verification.